

Energy Communities Noordertuin

EUCF Intensive days

Our region: Noordertuin

- 7 municipalities: **Schoten**, Wijnegem, Brasschaat, Brecht, Schilde, Kapellen, Stabroek
- Same characteristics: smaller business parks. Not much big industry.

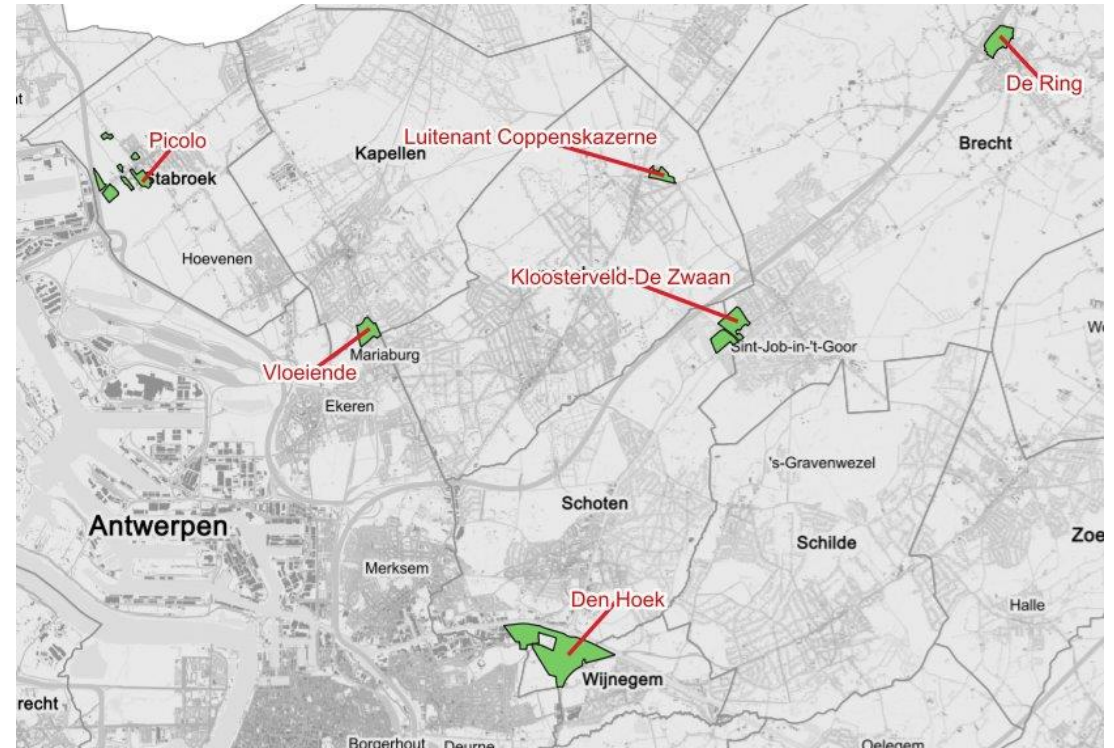


Oppervlakte
van provincie
Antwerpen



Why this EUCF project

- Work in Energylandscapes
- Priority Matrix showed potential
- Big potential for rooftop solar on business parks about 100 GWH/year
- Need for local exchange of energy
- Energy is not core business of most companies



Concept Development

- Development of Broad Framework agreement
 - All municipalities within province of Antwerpen can use this for 4 years
- Bureau selected to support with the development of the financial case
- **A LOT** of contact/calls with local businesses:
 - Barriers getting technical and financial information
 - Need for simulations
 - Underestimation on time spent by the bureaus for this part of the project
- Output: one report per participating company and per business park
 - Individual potential for solar depending on own consumption
 - Collective potential if rooftop use is maximized and considering all electricity consumption
 - Suggestions for storage: heat storage with water boiler, charging stations
 - Suggestions for energy sharing: energy communities, sale of energy, p2p, ...
 - 6 parks, 35 companies

Lessons Learned

- Need for clear policy (futureproof)
- Need to build trust: organize a local moment with the companies to explain the concept and what was studied
- Companies willing to invest themselves
- Energy sharing when financially interesting/long term gains clear
- Preference for keeping energy consumption internally: local storage

Business park	Energy Sharing	Group: boilers and charging stations	Expansion or sharing of loading infrastructure
Vloeiende	*	**	*
Luitenant Coppenskazerne	**	**	**
De Zwaan-Kloosterveld	*	***	**
De Ring zone 2	**	*	*
Den Hoek	*	**	*
Piccolo			

* Weinig interesse

** Middelmatige interesse

*** Veel interesse

Next steps

- Other EU-projects: WeShare
- Own initiatives and investments because of EUCF in some business parks
- Review of local policy: can province of Antwerp organize form of group purchasing to support local businesses and keep prices low?

Thanks

Antje Schurmans
Antje.schurmans@provincieantwerpen.be